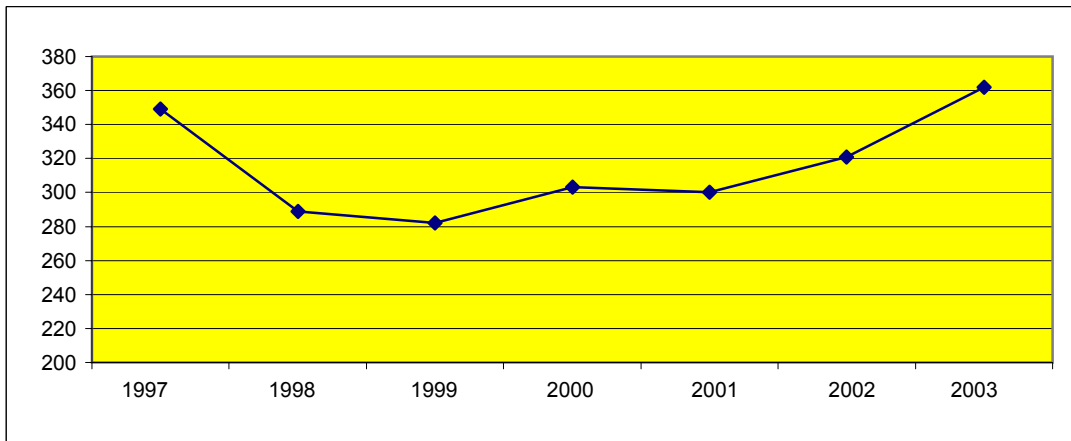


HISTORICAL COMPARISON OF AAAE MEMBERSHIP



HISTORICAL COMPARISON OF AAAE MEMBERSHIP BY REGION

Region	1994	1995	1996	1997	1998	1999	2000	2001	2002	2003
North Central	78	79	84	89	58	68	68	59	71	113
Eastern	47	40	40	30	24	23	24	22	25	
Southern	94	96	118	115	93	89	115	123	134	144
Western	37	37	32	34	33	27	31	31	30	38
*Others	8	10	2	6	6	6	3	2	3	10
Totals	264	262	276	274	214	213	241	237	263	305
Life-Retired				75	75	69	62	63	58	57
Grand Totals				349	289	282	303	300	321	362

COMPARISON OF MEMBERSHIP BY TYPE OF MEMBERSHIP BY REGION

	Active				Student				Retired			
	2000	2001	2002	2003	2000	2001	2002	2003	2000	2001	2002	2003
North Central	51	49	49	90	17	10	22	23	23	24	22	28
Eastern	22	22	20		2	0	5		5	5	5	
Southern	99	103	102	114	16	20	32	30	24	25	22	21
Western	30	31	29	37	1	0	1	1	9	8	8	8
*Others	3	2	3	10					1	1	1	0
Totals	205	207	203	251	36	30	60	54	62	63	58	57

*Other members include "Associate Membership" and some members from outside the U.S.

Prepared 12/02/2003 Tim H. Murphy, Treasurer