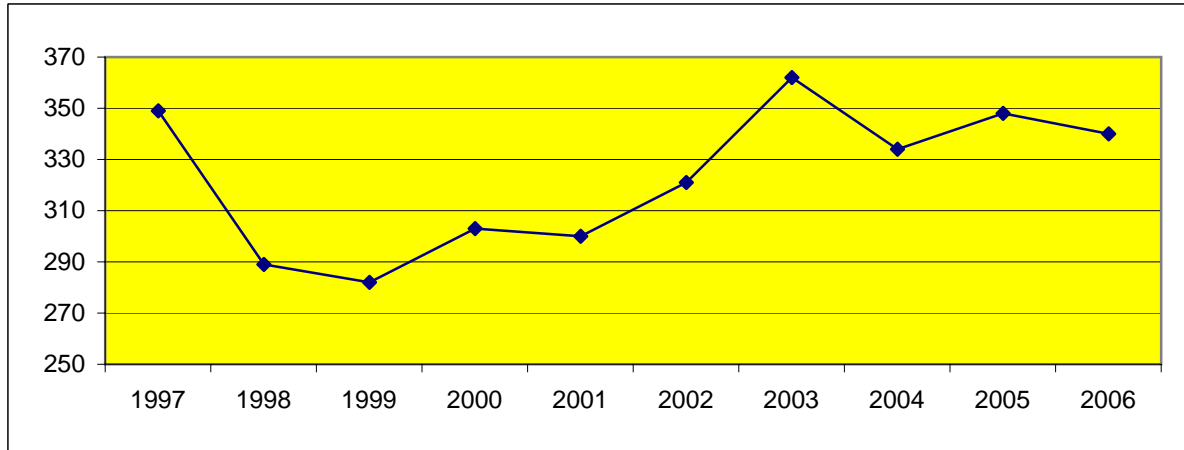


HISTORICAL AAE MEMBERSHIP



HISTORICAL AAE MEMBERSHIP BY REGION

Region	1994	1995	1996	1997	1998	1999	2000	2001	2002	2003	2004	2005	2006
North Central	78	79	84	89	58	68	68	59	71	113	107	104	106
Eastern	47	40	40	30	24	23	24	22	25				
Southern	94	96	118	115	93	89	115	123	134	144	136	144	138
Western	37	37	32	34	33	27	31	31	30	38	33	33	32
*Others	8	10	2	6	6	6	3	2	3	10	5	8	5
Totals	264	262	276	274	214	213	241	237	263	305	281	289	281
Life-Retired				75	75	69	62	63	58	57	53	59	59
Grand Totals				349	289	282	303	300	321	362	334	348	340

AAE MEMBERSHIP BY TYPE OF MEMBERSHIP BY REGION

	Active				Student				Retired			
	2003	2004	2005	2006	2003	2004	2005	2006	2003	2004	2005	2006
North Central	90	77	79	77	23	30	25	29	28	26	29	29
Southern	114	110	110	109	30	26	34	29	21	19	20	20
Western	37	30	30	30	1	3	3	2	8	8	10	10
*Others	10	5	8	5								
Totals	251	222	227	221	54	59	62	60	57	53	59	59

*Other members include "Associate Membership" and some members from outside the U.S.

Prepared 5/12/2006 Tim H. Murphy, Treasurer